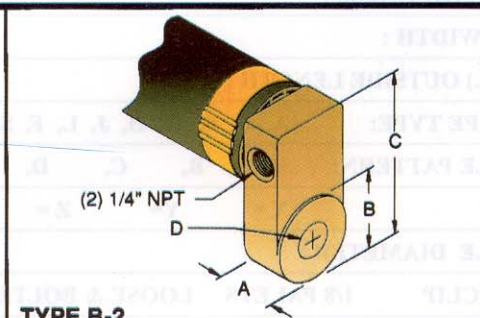


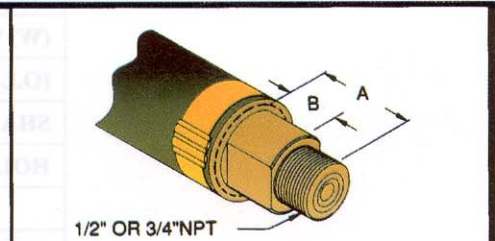
**TYPE B**

MCM	A	B	C
350/400	9/16"	1 5/16"	9/16"
500/600	9/16"	1 5/16"	5/8"
750	5/8"	1 3/8"	1 1/16"
1000	3/4"	1 1/2"	3/4"



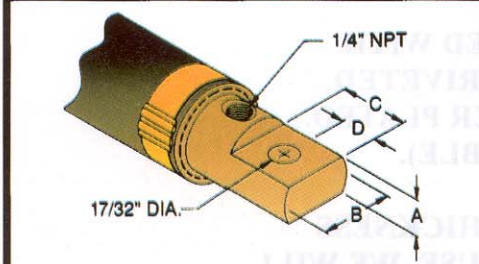
**TYPE B-2**

MCM	A	B	C	D
350/400	1 1/16"	1 1/16"	2 1 1/16"	1 7/32"
500/600	1 3/16"	1 3/8"	2 7/8"	1 7/32"
750	1 3/16"	1 5/8"	3 1/8"	2 1/32"
1000	1 5/16"	1 7/8"	3 1/4"	2 1/32"



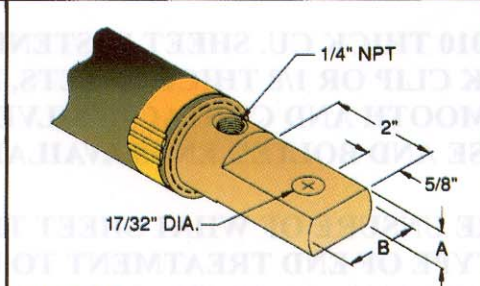
**TYPE B-4**

MCM	A	B
350/400	1 3/8"	1/2"
500/600	1 7/8"	5/8"
750	1 7/8"	5/8"
1000	2"	1 1/16"



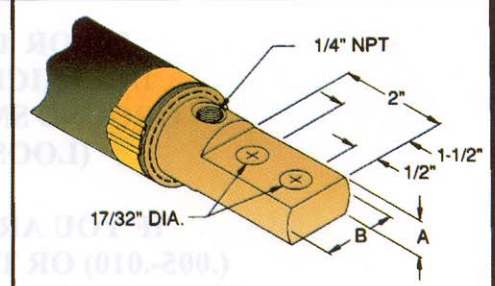
**TYPE B-5**

MCM	A	B	C	D
350/400	9/16"	1 1/8"	1 1/4"	1/2"
500/600	5/8"	1 1/4"	1 3/8"	5/8"
750	5/8"	1 3/8"	1 3/8"	5/8"
1000	5/8"	1 5/8"	1 3/8"	5/8"



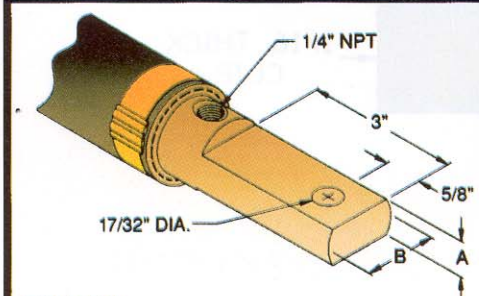
**TYPE B-6**

MCM	A	B
350/400	9/16"	1 1/8"
500/600	5/8"	1 1/4"
750	5/8"	1 3/8"
1000	5/8"	1 5/8"



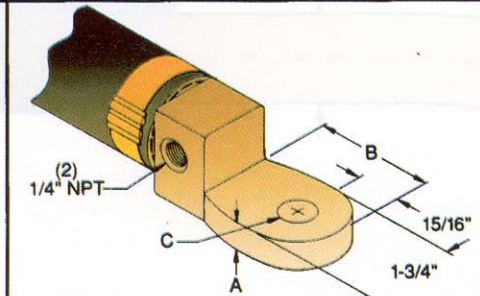
**TYPE B-6 (2-HOLE)**

MCM	A	B
350/400	9/16"	1 1/8"
500/600	5/8"	1 1/4"
750	5/8"	1 3/8"
1000	5/8"	1 5/8"



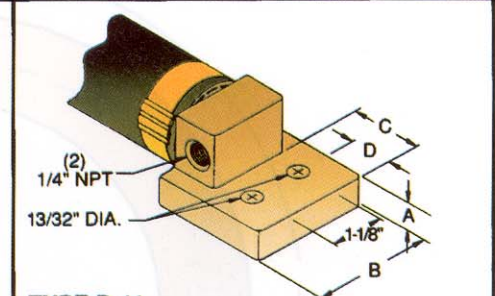
**TYPE B-7**

MCM	A	B
350/400	9/16"	1 1/8"
500/600	5/8"	1 1/4"
750	5/8"	1 3/8"
1000	5/8"	1 5/8"



**TYPE B-9**

MCM	A	B	C
350/400	9/16"	2 1/8"	1 7/32"
500/600	9/16"	2 1/8"	1 7/32"
750	9/16"	2 5/16"	2 1/32"
1000	5/8"	2 3/8"	2 1/32"



**TYPE B-11**

MCM	A	B	C	D
350/400	3/8"	2"	1 1/8"	9/16"
500/600	3/8"	2"	1 1/8"	9/16"
750	5/8"	2 1/2"	1 1/2"	7/8"
1000	3/4"	2 1/2"	1 1/2"	7/8"